

München RADAR EDDM_N_APP 123.90	München RADAR EDDM_S_APP 127.95	München RADAR EDDM_1_APP 128.02	München RADAR EDDM_2_APP 120.77	München RADAR EDMM_CTR 124.05	München RADAR EDMM_R_CTR 132.55	München RADAR EDMM_K_CTR 134.15
---------------------------------------	---------------------------------------	---------------------------------------	---------------------------------------	-------------------------------------	---------------------------------------	---------------------------------------

Apt Elev: 1487'

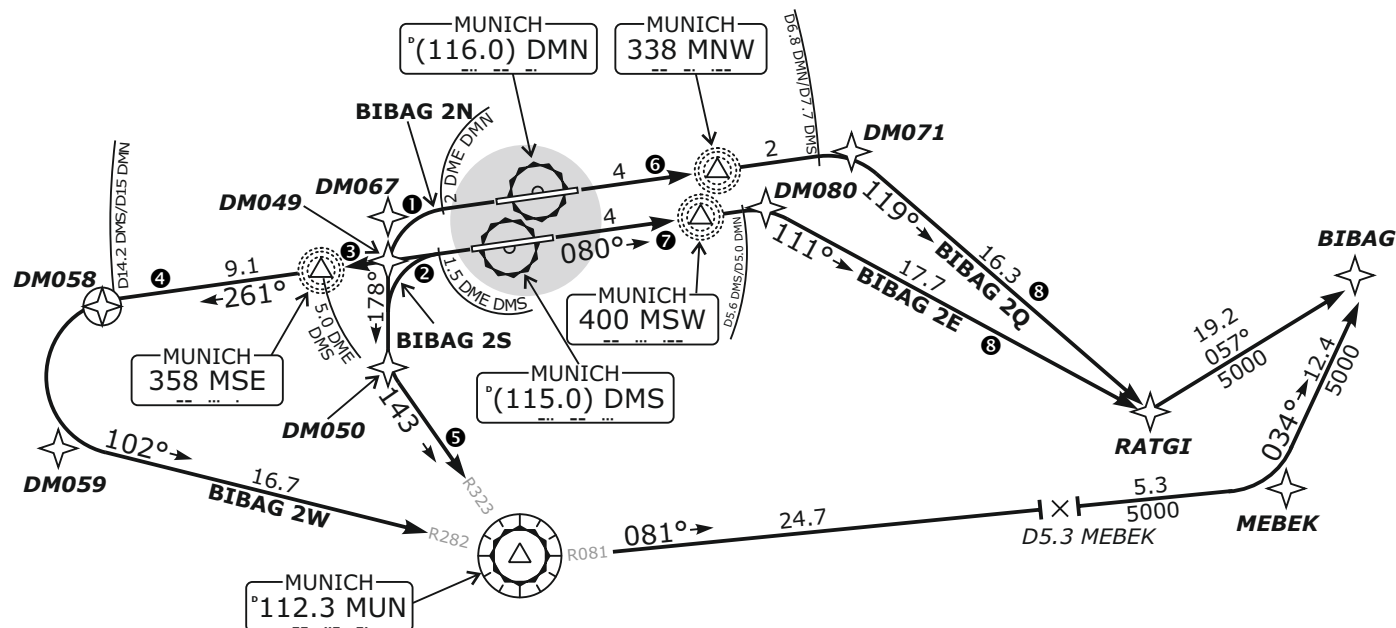
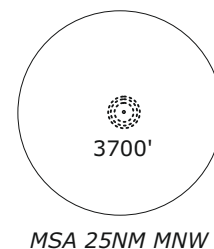
Trans level: By ATC

Trans alt: 5000'

**BIBAG 2E** - BIBAG TWO ECHO  
**BIBAG 2N** - BIBAG TWO NOVEMBER  
**BIBAG 2Q** - BIBAG TWO QUEBEC  
**BIBAG 2S** - BIBAG TWO SIERRA  
**BIBAG 2W** - BIBAG ONE WHISKEY

NOT AVAILABLE FOR FLIGHTS VIA (U)L605, Q104 &amp; Q118

NOT TO SCALE

**RESTRICTIONS:**

- ① MAX 210 KT during turn
- ② MAX 210 KT until established on MUN R-323
- ③ MAX 220 KT until passing MSE
- ④ MAX 250 KT until passing DMS 14 DME
- ⑤ MAX 250 KT until passing MEBEK
- ⑥ MAX 230 KT until passing DMN 6.8 DME
- ⑦ MAX 230 KT until passing DMS 5.6 DME
- ⑧ MAX 250 KT until passing RATGI

**REMARKS:**

NAVAID addition for real frequencies  
available on <http://www.vacc-sag.org/airport/EDDM>  
if not installed use old frequencies:  
MAH - 108.4 / DMS - 108.6 / ILS08R - 110.9  
MIQ - 426.5 / MSE - 385.0 / ILS08L - 110.3

Pilots of GPS/FMS-RNAV-equipped aircraft shall, if possible, use the supplementary GPS/FMS RNAV procedures which are described following the text "GPS / FMS RNAV" and charted. The ground-based navigation aids required for the use of the respective conventional flight procedure and the associated aircraft equipment shall remain in operation at all times.

**Contact München Radar when advised by Tower.****Initial climb clearance FL70**

SID	RWY	ROUTING	GPS/FMS RNAV
<b>BIBAG 2E</b>	<b>08R</b>	Climb on course 080° MSW (course 080° MSE) to 5.6 DME DMS (5.0 DME DMN); RT, on track 111° to RATGI; LT, on track 056° to BIBAG. Climb with 3.8% (235 ft/NM) until passing 3700.	[A1900+] - DM080[K230-; R] - RATGI[K250-; L] - BIBAG.
<b>BIBAG 2N</b>	<b>26R</b>	Climb on course 261° MNE (course 261° MNW) to 2.0 DME DMN or 1900, whichever is later; LT, on heading 178° to intercept R323 MUN, on R323 MUN to MUN; LT, on track 081° to MEBEK, LT, on track 034° to BIBAG.	DM067[K210-; L] - [A1900+] - DM050[L] - MUN[K250-; L] - MEBEK[K250-; L] - BIBAG.
<b>BIBAG 2Q</b>	<b>08L</b>	Climb on course 080° MNW (course 080° MNE) to 6.8 DME DMN (7.7 DME DMS); RT, on track 119° to RATGI, LT, on track 056° to BIBAG. Climb with 3.4% (210 ft/NM) until passing 3700.	[A1900+] - DM071[K230-; R] - RATGI[K250-; L] - BIBAG.
<b>BIBAG 2S</b> If unable to comply request BIBAG 2W	<b>26L</b>	Climb on course 261° MSE (course 261° MSW) to 1.5 DME DMS; or 1900, whichever is later; LT, on heading 178° to intercept R323 MUN; on R323 MUN to MUN; LT, on track 081° to MEBEK; LT, on track 034° to BIBAG. Climb with 6.8% (415 ft/NM) or more until passing 4200.	DM049[K210-; L] - [A1900+] - DM050[K210-; L] - MUN[L] - MEBEK[K250-; L] - BIBAG.
<b>BIBAG 2W</b>		Climb on course 261° MSE (course 261° from MSW) to 14.2 DME DMS (15.0 DME DMN); LT, on track 102° to MUN; LT, on track 081° to MEBEK; LT, on track 034° to BIBAG.	[A1900+] - MSE[K220-] - DM058[L] - DM059[K250-] - MUN[L] - MEBEK[L] - BIBAG.