

EDDM/MUC  
MÜNCHEN

EDDM SID-05  
Eff: 15 MAR 2007

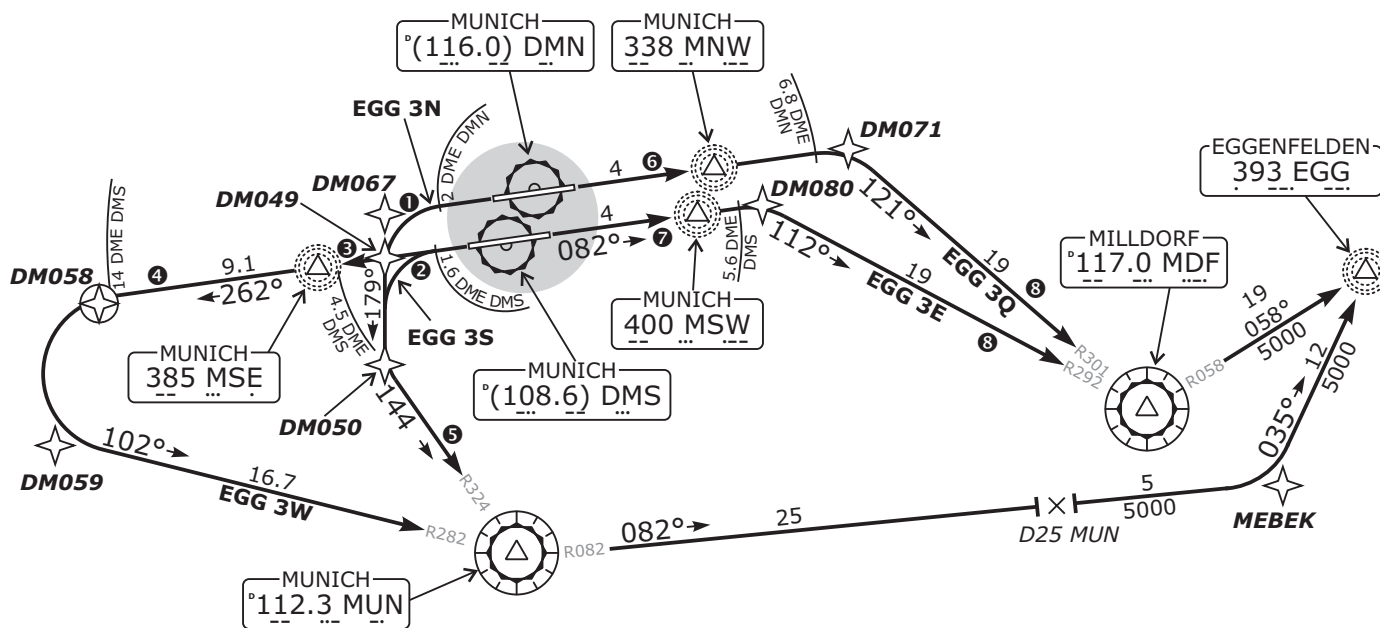
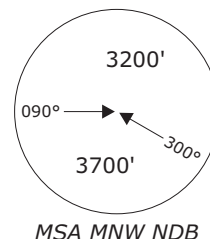
MÜNCHEN, GERMANY  
EGG DEPARTURES

München DEPARTURE		München ARRIVAL		München RADAR		
EDDM_N_DEP	EDDM_S_DEP	EDDM_N_APP	EDDM_S_APP	EDMM_N_CTR	EDMM_S_CTR	EDMM_W_CTR
123.90	127.95	128.02	120.77	129.10	124.05	124.82

**EGG 3E** - EGGENFELDEN THREE ECHO  
**EGG 3N** - EGGENFELDEN THREE NOVEMBER  
**EGG 3Q** - EGGENFELDEN THREE QUEBEC  
**EGG 3S** - EGGENFELDEN THREE SIERRA  
**EGG 3W** - EGGENFELDEN THREE WHISKEY

NOT AVAILABLE FOR FLIGHTS VIA (U)L605 & (U)M749

NOT TO SCALE



**RESTRICTIONS:**

- ① MAX **210 KT** during turn
- ② MAX **210 KT** until established on **MUN R-324**
- ③ MAX **220 KT** until passing **MSE**
- ④ MAX **250 KT** until passing **DMS 14 DME**
- ⑤ MAX **250 KT** until passing **MUN**
- ⑥ MAX **230 KT** until passing **DMN 6.8 DME**
- ⑦ MAX **230 KT** until passing **DMS 5.6 DME**
- ⑧ MAX **250 KT** until passing **MDF**

**Remain on Tower frequency, when advised by ATC contact München Departure, Arrival or Radar.**

**Initial climb clearance FL70**  
TRANS ALT: 5000' • APT ELEV: 1487'

SID	RWY	ROUTING	GPS/FMS RNAV
<b>EGG 3E</b>	<b>08R</b>	Climb on runway track to <b>1900'</b> , then via MSW to DMS 5.6 DME or <b>4000'</b> , whichever is later, turn RIGHT, intercept MDF R-292 inbound to MDF, MDF R-058 to EGG.	[A1900+] - DM080[A4000+; K230-; R] - MDF[K250-; L] - EGG.
<b>EGG 3N</b>	<b>26R</b>	Climb on runway track to DMN 2 DME or <b>1900'</b> , whichever is later, turn LEFT, 179° track, intercept MUN R-324 inbound to MUN, MUN R-082 to MEBEK, turn LEFT, 035° track to EGG.	[A1900+] - DM067[K210-; L] - DM050[L] - MUN[K250-; L] - MEBEK[L] - EGG.
<b>EGG 3Q</b>	<b>08L</b>	Climb on runway track to <b>1900'</b> , then via MNW to DMN 6.8 DME or <b>4000'</b> , whichever is later, turn RIGHT, intercept MDF R-301 inbound to MDF, MDF R-058 to EGG.	[A1900+] - DM071[A4000+; K230-; R] - MDF[K250-; L] - EGG.
<b>EGG 3S</b> If unable to comply request EGG 3W	<b>26L</b>	Climb on runway track to DMS 1.6 DME or <b>1900'</b> , whichever is later, turn LEFT within DMS 4.5 DME, 180° track, intercept MUN R-325 inbound to MUN, MUN R-082 to MEBEK, turn LEFT, 035° track to EGG.	[A1900+] - DM049[L] - DM050 [K210-; L] - MUN[K250-; L] - MEBEK[L] - EGG.
<b>EGG 3W</b>		Climb on runway track to <b>1900'</b> , intercept 262° bearing via MSE to DMS 14 DME, turn LEFT, intercept MUN R-282 inbound to MUN, MUN R-082 to MEBEK, turn LEFT, 035° track to EGG.	[A1900+] - MSE[K220-] - DM058[L] - DM059[K250-] - MUN[L] - MEBEK[L] - EGG.