

EDDM/MUC
MÜNCHEN

EDDM SID-06
Eff: 13 APR 2006

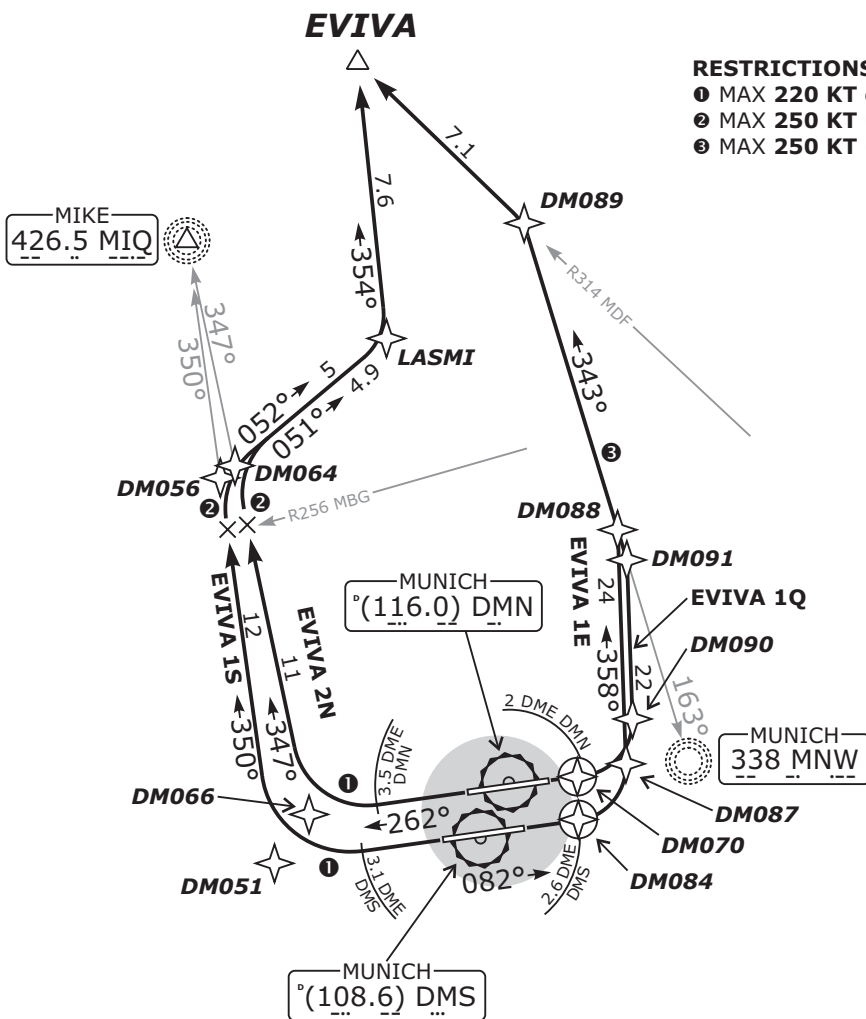
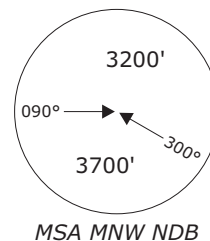
MÜNCHEN, GERMANY
EVIVA DEPARTURES

München DEPARTURE		München ARRIVAL		München RADAR		
EDDM_N_DEP	EDDM_S_DEP	EDDM_N_APP	EDDM_S_APP	EDMM_N_CTR	EDMM_S_CTR	EDMM_W_CTR
123.90	127.95	128.02	120.77	129.10	124.05	124.82

EVIVA 1E - EVIVA ONE ECHO
EVIVA 2N - EVIVA TWO NOVEMBER
EVIVA 1Q - EVIVA ONE QUEBEC
EVIVA 1S - EVIVA ONE SIERRA

FOR PROP AIRCRAFT ONLY
JET AIRCRAFT FILE SID GIVMI OR MIQ

NOT TO SCALE



- RESTRICTIONS:**
- ① MAX 220 KT during turn
 - ② MAX 250 KT until passing LASMI
 - ③ MAX 250 KT until established on MDF R-314



Remain on Tower frequency, when advised by
ATC contact München Departure, Arrival or Radar.

Initial climb clearance FL70
TRANS ALT: 5000' • APT ELEV: 1487'

SID	RWY	ROUTING	GPS/FMS RNAV
EVIVA 1E	08R	Climb on runway track to DMS 2.6 DME or 1900' , whichever is later, turn LEFT, 358° track, intercept 343° bearing from MNW, intercept MDF R-314 to EVIVA.	[A1900+] - DM084[L]- DM087 - DM088[L] - DM089[K250-; L] - EVIVA.
EVIVA 2N	26R	Climb on runway track to DMN 3.5 DME or 1900' , whichever is later, turn RIGHT, intercept 347° bearing towards MIQ, when passing MBG R-256 turn RIGHT, 051° track to LASMI, turn LEFT, 354° track to EVIVA.	[A1900+] - DM066[K220-; R] - DM064[R] - LASMI[K250-; L] - EVIVA.
EVIVA 1Q	08L	Climb on runway track to DMN 2 DME or 1900' , whichever is later, turn LEFT, 358° track, intercept 343° bearing from MNW, intercept MDF R-314 to EVIVA.	[A1900+] - DM070[L]- DM090 - DM091[L] - DM089[K250-; L] - EVIVA.
EVIVA 1S	26L	Climb on runway track to DMS 3.1 DME or 1900' , whichever is later, turn RIGHT, intercept 350° bearing towards MIQ, when passing MBG R-256 turn RIGHT, 052° track to LASMI, turn LEFT, 354° track to EVIVA.	[A1900+] - DM051[K220-; R] - DM056[R] - LASMI[K250-; L] - EVIVA.