

München RADAR EDDM_N_APP 123.90	München RADAR EDDM_S_APP 127.95	München RADAR EDDM_1_APP 128.02	München RADAR EDDM_2_APP 120.77	München RADAR EDMM_CTR 124.05	München RADAR EDMM_R_CTR 132.55	München RADAR EDMM_K_CTR 134.15
---------------------------------------	---------------------------------------	---------------------------------------	---------------------------------------	-------------------------------------	---------------------------------------	---------------------------------------

Apt Elev: 1487'

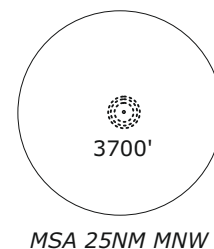
Trans level: By ATC

Trans alt: 5000'

MIQ 8E - MIKE EIGHT ECHO
MIQ 9N - MIKE NINE NOVEMBER
MIQ 8Q - MIKE EIGHT QUEBEC
MIQ 8S - MIKE EIGHT SIERRA

NOT TO SCALE

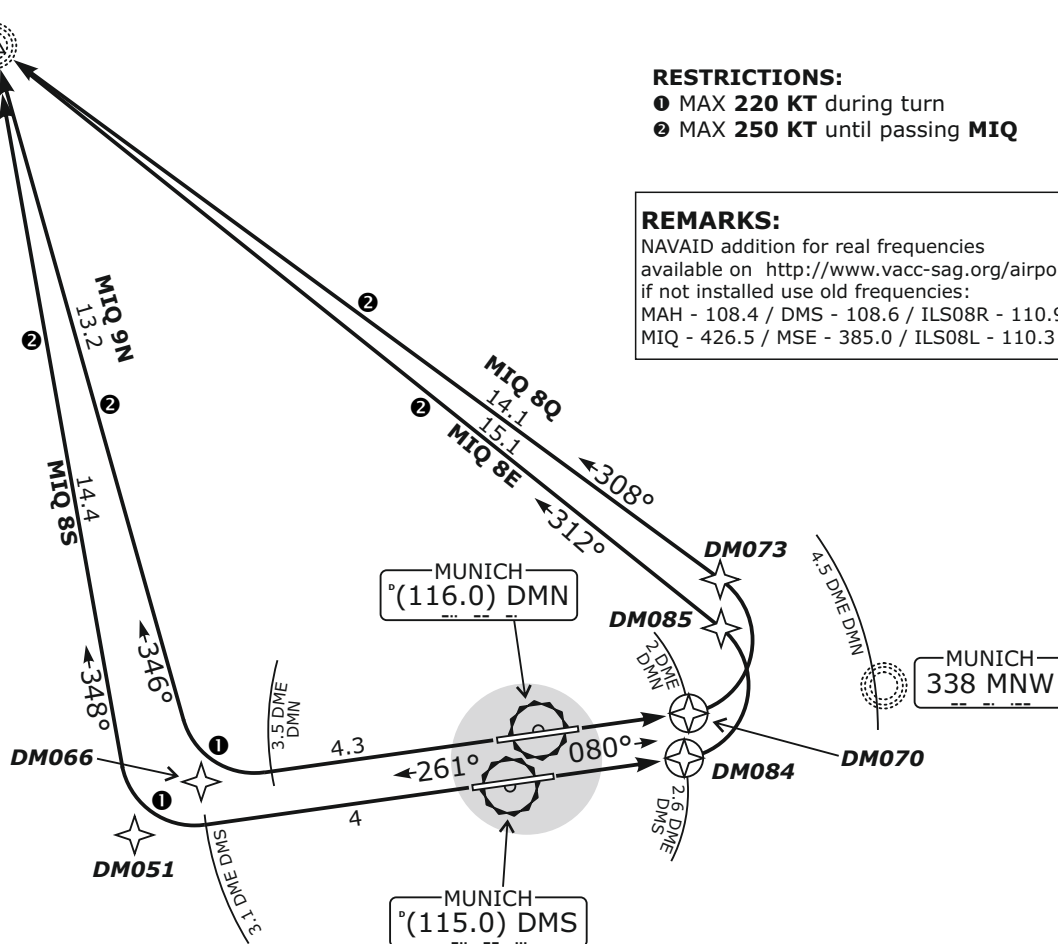
WILL BE ASSIGNED FOR NON-RNAV
EQUIPPED ACFT BY ATC ONLY:

MIKE
426.0 MIQ**RESTRICTIONS:**

- ① MAX 220 KT during turn
- ② MAX 250 KT until passing MIQ

REMARKS:

NAVAID addition for real frequencies
available on <http://www.vacc-sag.org/airport/EDDM>
if not installed use old frequencies:
MAH - 108.4 / DMS - 108.6 / ILS08R - 110.9
MIQ - 426.5 / MSE - 385.0 / ILS08L - 110.3



Pilots of GPS/FMS-RNAV-equipped aircraft shall, if possible, use the supplementary GPS/FMS RNAV procedures which are described following the text "GPS / FMS RNAV:" and charted. The ground-based navigation aids required for the use of the respective conventional flight procedure and the associated aircraft equipment shall remain in operation at all times

Contact München Radar when advised by Tower.**Initial climb clearance FL70**

SID	RWY	ROUTING	GPS/FMS RNAV
MIQ 8E	08R	Climb on RWY track to 2.6 DME DMS; or 1900, whichever is later; LT, on course 312° MIQ to MIQ.	
MIQ 9N	26R	Climb on RWY track to 3.5 DME DMN; RT, on course 346° MIQ to MIQ.	
MIQ 8Q	08L	Climb on RWY track to 2.0 DME DMN; or 1900, whichever is later; LT, on course 308° MIQ to MIQ.	
MIQ 8S	26L	Climb on RWY track to 3.1 DME DMS (4.1 DME DMN); RT, on course 348° MIQ (course 348° MSE) to MIQ.	