

EDDM/MUC
MÜNCHEN

EDDM SID-11
Eff: 13 APR 2006

MÜNCHEN, GERMANY
MIQ DEPARTURES

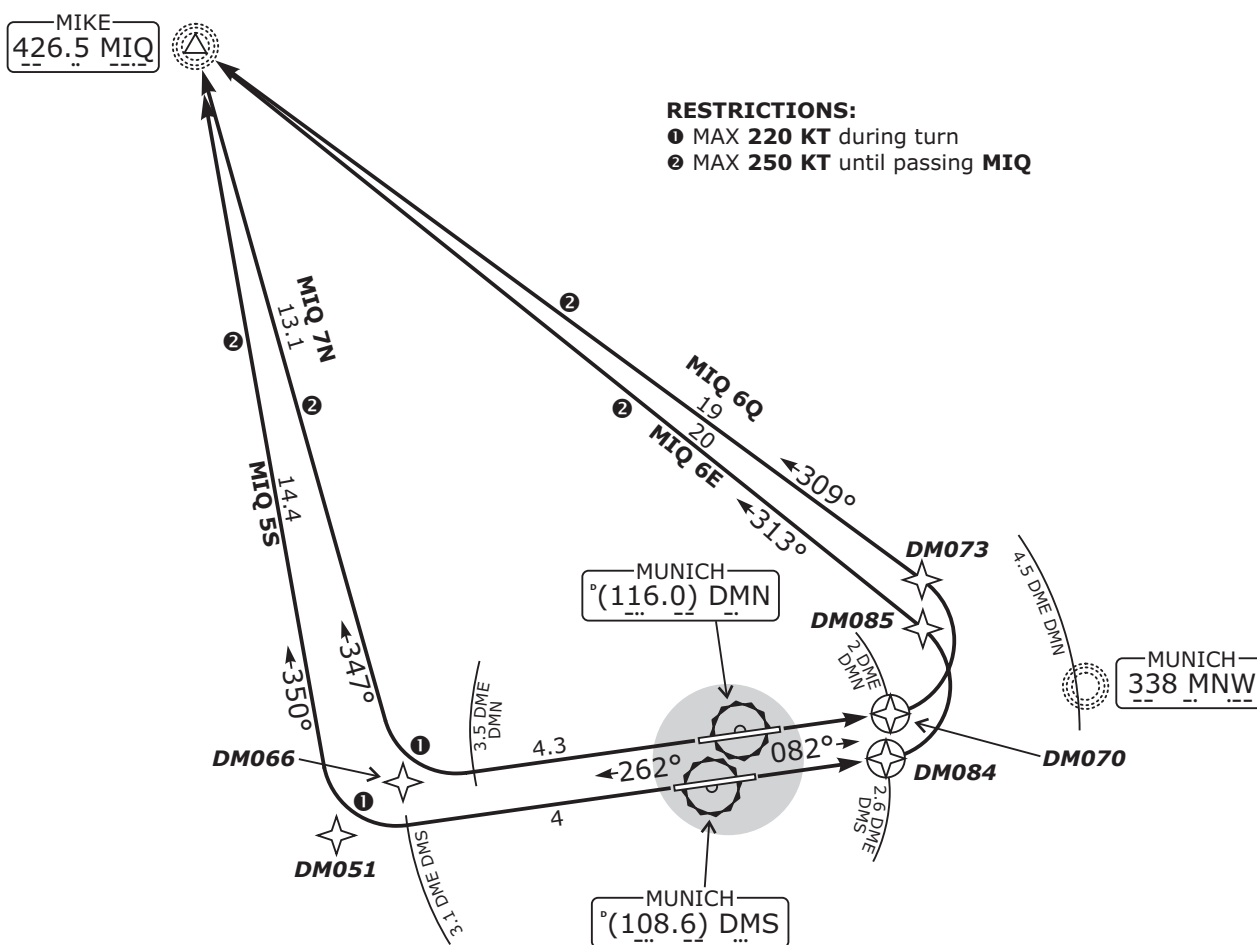
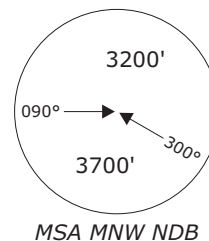
München DEPARTURE		München ARRIVAL		München RADAR		
EDDM_N_DEP	EDDM_S_DEP	EDDM_N_APP	EDDM_S_APP	EDMM_N_CTR	EDMM_S_CTR	EDMM_W_CTR
123.90	127.95	128.02	120.77	129.10	124.05	124.82

MIQ 6E - MIKE SIX ECHO
MIQ 7N - MIKE SEVEN NOVEMBER
MIQ 6Q - MIKE SIX QUEBEC
MIQ 5S - MIKE FIVE SIERRA

AVAILABLE FOR JET AIRCRAFT ONLY
PROP AIRCRAFT FILE SID EVIVA

MANDATORY FOR FLIGHTS
VIA LASGA (ATS ROUTES (U)M726 / T202)
OR SULUS (ATS ROUTES (U)L604 / T852)

NOT TO SCALE



RESTRICTIONS:
① MAX 220 KT during turn
② MAX 250 KT until passing MIQ

Remain on Tower frequency, when advised by
ATC contact München Departure, Arrival or Radar.

Initial climb clearance FL70
TRANS ALT: 5000' • APT ELEV: 1487'

SID	RWY	ROUTING	GPS/FMS RNAV
MIQ 6E	08R	Climb on runway track to DMS 2.6 DME or 1900' , whichever is later, turn LEFT to MIQ.	[A1900+] - <u>DM084</u> [L] - DM085 - MIQ[K250-].
MIQ 7N	26R	Climb on runway track to DMN 3.5 DME or 1900' , whichever is later, turn RIGHT, intercept 347° bearing to MIQ.	[A1900+] - DM066[K220-; R] - MIQ[K250-].
MIQ 6Q	08L	Climb on runway track to DMN 2 DME or 1900' , whichever is later, turn LEFT within DMN 4.5 DME to MIQ.	[A1900+] - <u>DM070</u> [L] - DM073 - MIQ[K250-].
MIQ 5S	26L	Climb on runway track to DMS 3.1 DME or 1900' , whichever is later, turn RIGHT, intercept 350° bearing to MIQ.	[A1900+] - DM051[K220-; R] - MIQ[K250-].