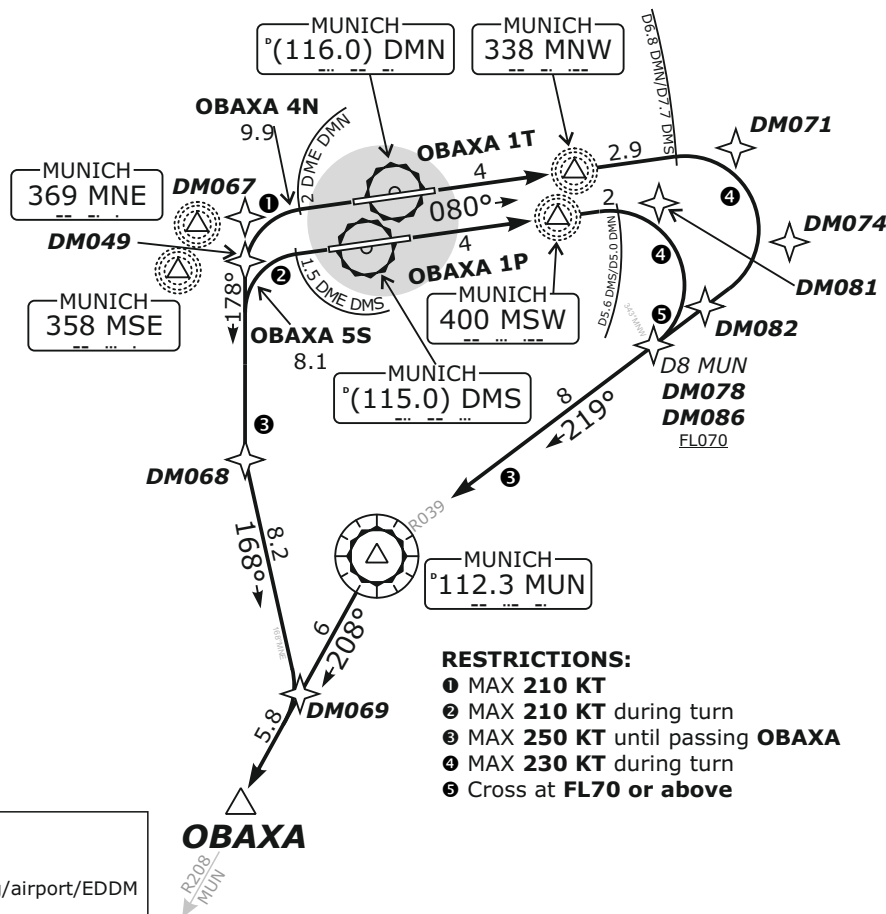
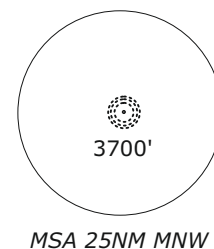


München RADAR EDDM_N_APP 123.90	München RADAR EDDM_S_APP 127.95	München RADAR EDDM_1_APP 128.02	München RADAR EDDM_2_APP 120.77	München RADAR EDMM_CTR 124.05	München RADAR EDMM_R_CTR 132.55	München RADAR EDMM_K_CTR 134.15
Apt Elev: 1487'		Trans level: By ATC		Trans alt: 5000'		

OBAXA 1P - OBAXA ONE PAPA
OBAXA 1T - OBAXA ONE TANGO
OBAXA 4N - OBAXA FOUR NOVEMBER
OBAXA 5S - OBAXA FIVE SIERRA

AVAILABLE FOR PROP AIRCRAFT ONLY

NOT TO SCALE



RESTRICTIONS:

- ① MAX 210 KT
- ② MAX 210 KT during turn
- ③ MAX 250 KT until passing OBAXA
- ④ MAX 230 KT during turn
- ⑤ Cross at FL70 or above

REMARKS:

NAVAID addition for real frequencies available on <http://www.vacc-sag.org/airport/EDDM> if not installed use old frequencies:
MAH - 108.4 / DMS - 108.6 / ILS08R - 110.9
MIQ - 426.5 / MSE - 385.0 / ILS08L - 110.3

Pilots of GPS/FMS-RNAV-equipped aircraft shall, if possible, use the supplementary GPS/FMS RNAV procedures which are described following the text "GPS / FMS RNAV:" and charted. The ground-based navigation aids required for the use of the respective conventional flight procedure and the associated aircraft equipment shall remain in operation at all times

Contact München Radar when advised by Tower.

Initial climb clearance FL70

SID	RWY	ROUTING	GPS/FMS RNAV
OBAXA 1P	08R	Climb on RWY track to 5.6 DME DMS (5.0 DME DMN); RT, on R039 MUN to MUN; LT, on R208 MUN to OBAXA. MAX IAS 230 kt during initial turn. Cross 8.0 DME MUN (crossing 335° MSW) at FL70 or above.	[A1900+] - DM081[R] - DM082[K230-; R] - DM086[F070+] - MUN[L] - OBAXA[K250-].
OBAXA 4N	26R	Climb on course 261° MNE (course 261° MNW) to 2.0 DME DMN or 1900, whichever is later; LT, on heading 178° to intercept course 168° from MNE; on course 168° MNE to intercept R208 MUN; on R208 MUN to OBAXA	DM067[K210-; L] - [A1900+] - DM068[L] - DM069[R] - OBAXA[K250-].
OBAXA 1T	08L	Climb on RWY track to 6.8 DME DMN (7.7 DME DMS); RT, on R039 MUN to MUN; LT, on R208 MUN to OBAXA. MAX IAS 230 kt during initial turn. Cross 8.0 DME MUN (crossing 343° MNW) at FL70 or above	[A1900+] - DM071[R] - DM074[K230-; R] - DM078[F070+] - MUN[L] - OBAXA[K250-].
OBAXA 5S	26L	Climb on course 261° MSE (course 261° MSW) to 1.5 DME DMS; or 1900, whichever is later; LT, on heading 178° to intercept course 168° from MNE; on course 168° MNE to intercept R208 MUN; on R208 MUN to OBAXA.	DM049[K210-; L] - [A1900+] - DM068[L] - DM069[R] - OBAXA[K250-].