

EDDM/MUC
MÜNCHEN

EDDM SID-12
Eff: 15 MAR 2007

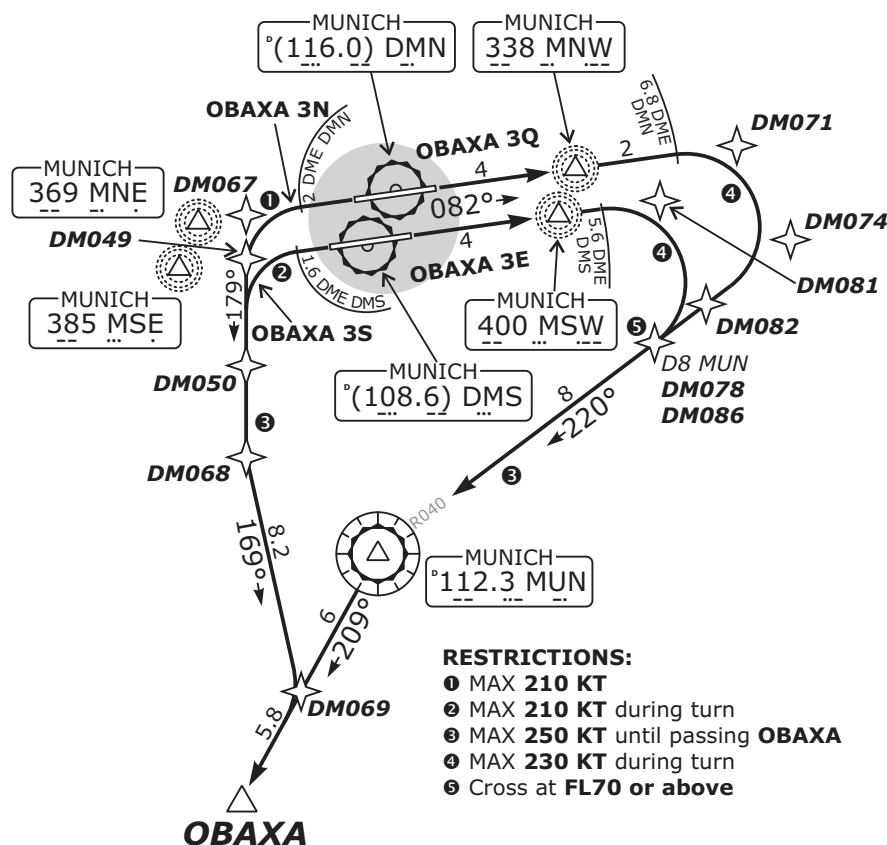
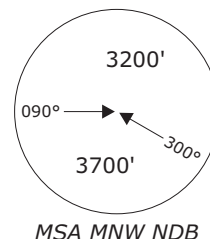
MÜNCHEN, GERMANY
OBAXA DEPARTURES

München DEPARTURE		München ARRIVAL		München RADAR		
EDDM_N_DEP	EDDM_S_DEP	EDDM_N_APP	EDDM_S_APP	EDMM_N_CTR	EDMM_S_CTR	EDMM_W_CTR
123.90	127.95	128.02	120.77	129.10	124.05	124.82

OBAXA 3E - OBAXA THREE ECHO
OBAXA 3N - OBAXA THREE NOVEMBER
OBAXA 3Q - OBAXA THREE QUEBEC
OBAXA 3S - OBAXA THREE SIERRA

AVAILABLE FOR PROP AIRCRAFT ONLY

NOT TO SCALE



Remain on Tower frequency, when advised by
ATC contact Munich Departure, Arrival or Radar.

Initial climb clearance FL70
TRANS ALT: 5000' • APT ELEV: 1487'

SID	RWY	ROUTING	GPS/FMS RNAV
OBAXA 3E	08R	Climb on runway track to 1900' , then via MSW to DMS 5.6 DME or 4000' , whichever is later, turn RIGHT, intercept MUN R-041 inbound to MUN, turn LEFT, on MUN R-209 to OBAXA.	[A1900+] - DM081[A4000+; R] - DM082[K230-; R] - DM086[F070+] - MUN[L] - OBAXA [K250-].
OBAXA 3N	26R	Climb on runway track to DMN 2 DME or 1900' , whichever is later, turn LEFT, on 179° track to intercept 169° track MNE, on track 169° to intercept MUN R-209 to OBAXA.	[A1900+] - DM067[K210-; L] - DM068[L] - DM069[R] - OBAXA [K250-].
OBAXA 3Q	08L	Climb on runway track to 1900' , then via MNW to DMN 6.8 DME or 4000' , whichever is later, turn RIGHT, intercept MUN R-040 inbound to MUN, turn LEFT, on MUN R-209 to OBAXA.	[A1900+] - DM071[A4000+; R] - DM074[K230-; R] - DM078[F070+] - MUN[L] - OBAXA [K250-].
OBAXA 3S	26L	Climb on runway track to DMS 1.6 DME or 1900' , whichever is later, turn LEFT within DMS 4.5 DME, 179° track to intercept track 169° MNE, on track 169° MNE to intercept MUN R-209 to OBAXA.	[A1900+] - DM049[K210-; L] - DM068 [L] - DM069[R] - OBAXA [K250-].