

München RADAR EDDM_N_APP 123.90	München RADAR EDDM_S_APP 127.95	München RADAR EDDM_1_APP 128.02	München RADAR EDDM_2_APP 120.77	München RADAR EDMM_CTR 124.05	München RADAR EDMM_R_CTR 132.55	EDMM_K_CTR 134.15
---------------------------------------	---------------------------------------	---------------------------------------	---------------------------------------	-------------------------------------	---------------------------------------	----------------------

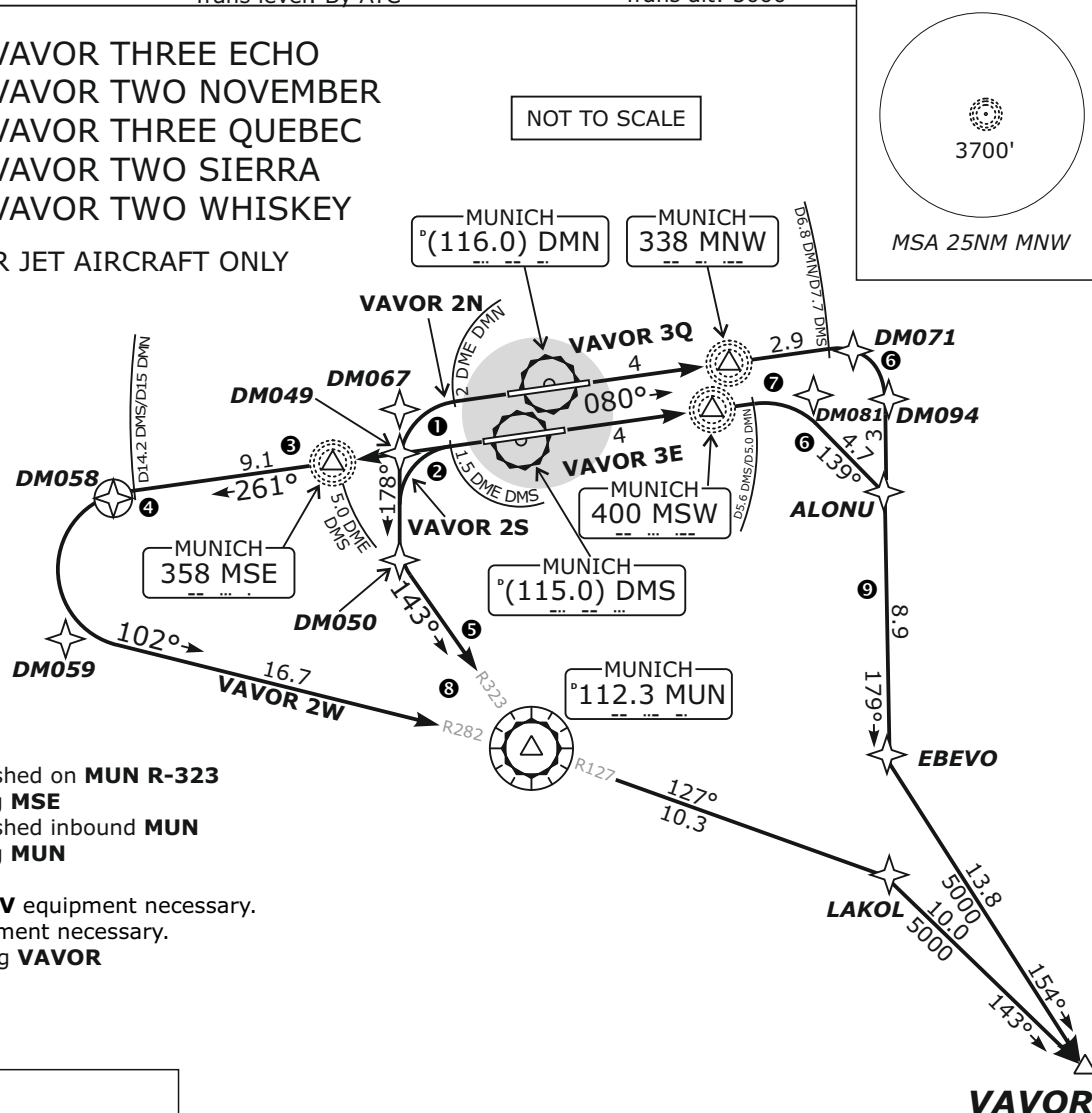
Apt Elev: 1487'

Trans level: By ATC

Trans alt: 5000'

VAVOR 3E - VAVOR THREE ECHO
VAVOR 2N - VAVOR TWO NOVEMBER
VAVOR 3Q - VAVOR THREE QUEBEC
VAVOR 2S - VAVOR TWO SIERRA
VAVOR 2W - VAVOR TWO WHISKEY

AVAILABLE FOR JET AIRCRAFT ONLY

**RESTRICTIONS:**

- 1 MAX 210 KT during turn
- 2 MAX 210 KT until established on MUN R-323
- 3 MAX 220 KT until passing MSE
- 4 MAX 250 KT until established inbound MUN
- 5 MAX 250 KT until passing MUN
- 6 MAX 230 KT during turn
- 7 After passing 3700 **BRNAV** equipment necessary.
- 8 After **MUN BRNAV** equipment necessary.
- 9 MAX 250 KT until crossing VAVOR

REMARKS:

NAVAID addition for real frequencies
available on <http://www.vacc-sag.org/airport/EDDM>
if not installed use old frequencies:
MAH - 108.4 / DMS - 108.6 / ILS08R - 110.9
MIQ - 426.5 / MSE - 385.0 / ILS08L - 110.3

Pilots of GPS/FMS-RNAV-equipped aircraft shall, if possible, use the supplementary GPS/FMS RNAV procedures which are described following the text "GPS / FMS RNAV:" and charted. The ground-based navigation aids required for the use of the respective conventional flight procedure and the associated aircraft equipment shall remain in operation at all times.

Contact München Radar when advised by Tower.**Initial climb clearance FL70**

SID	RWY	ROUTING	GPS/FMS RNAV
VAVOR 3E	08R	Climb on course 080° MSW (course 080° MSE) to D5.6 DMS (D5 DMN); RT, on track 139° to ALONU; RT, on track 179° to EBEVO; LT, on track 154° to VAVOR. Climb with 3.8% (235 ft/NM) until passing 3700.	RNAV: [A1900+] - DM081[A4000+; R] - ALONU[K230-; R] - EBEVO[L] - VAVOR[K250-].
VAVOR 2N	26R	Climb on course 261° MNE (course 261° MNW) to D2 DMN or 1900, whichever is later; LT, on heading 178° to intercept R323 MUN, on R323 MUN to MUN; LT, on track 127° to LAKOL; RT, on track 143° to VAVOR. Climb with 5.5% (335 ft/NM) or more until passing 4200.	DM067[K210-; L] - [A1900+] - DM050[L] - MUN[K250-; L] - LAKOL[R] - VAVOR.
VAVOR 3Q	08L	Climb on course 080° MNW (course 080° MNE) to 6.8 DME DMN (7.7 DME DMS); RT, on track 179° to EBEVO; LT, on track 154° to VAVOR. Climb with 3.4% (210 ft/NM) until passing 3700.	[A1900+] - DM071[R] - DM094[K230-; R] - EBEVO[L] - VAVOR[K250-].
VAVOR 2S	26L	Climb on course 261° MSE (course 261° MSW) to 1.5 DME DMS; or 1900, whichever is later; LT, on heading 178° to intercept R323 MUN; on R323 MUN to MUN; LT, on track 127° to LAKOL; RT, on track 143° to VAVOR. Climb with 6.8% (415 ft/NM) or more until passing 4200.	DM049[K210-; L] - [A1900+] - DM050[K210-; L] - MUN[K250-; L] - LAKOL[R] - VAVOR.
VAVOR 2W		Climb on course 261° MSE (course 261° MSW) to 14.2 DME DMS (15.0 DME DMN); LT, on track 102° to MUN; RT, on track 127° to LAKOL; RT, on track 143° to VAVOR.	[A1900+] - MSE[K220-] - DM058[L] - DM059[K250-] - MUN[R] - LAKOL[R] - VAVOR.